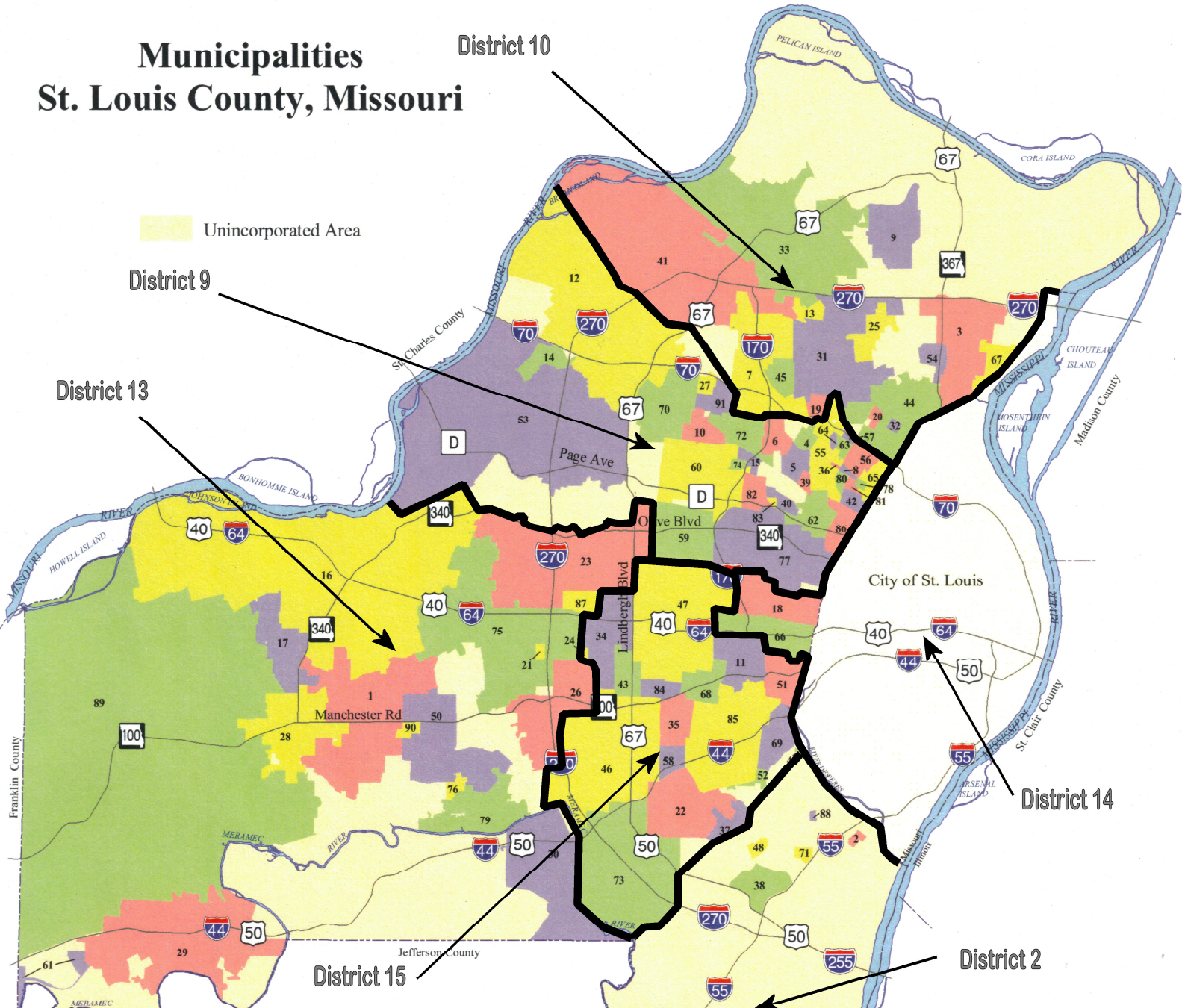


# Municipalities St. Louis County, Missouri



Unincorporated Area

District 9

District 10

District 13

District 14

District 2

District 15

## MUNICIPALITIES

- |                           |                      |                        |
|---------------------------|----------------------|------------------------|
| 1 BALLWIN                 | 32 FLOREDELL HILLS   | 63 PASADENA HILLS      |
| 2 BELLA VILLA             | 33 FLORISSANT        | 64 PASADENA PARK       |
| 3 BELLEFONTAINE NEIGHBORS | 34 FRONTENAC         | 65 PINE LAWN           |
| 4 BELLERIVE               | 35 GLENDALE          | 66 RICHMOND HEIGHTS    |
| 5 BEL-NOR                 | 36 GLEN ECHO PARK    | 67 RIVERVIEW           |
| 6 BEL-RIDGE               | 37 GRANTWOOD VILLAGE | 68 ROCK HILL           |
| 7 BERKELEY                | 38 GREEN PARK        | 69 SHREWSBURY          |
| 8 BEVERLY HILLS           | 39 GREENDALE         | 70 ST. ANN             |
| 9 BLACK JACK              | 40 HANLEY HILLS      | 71 ST. GEORGE          |
| 10 BRECKENRIDGE HILLS     | 41 HAZELWOOD         | 72 ST. JOHN            |
| 11 BRENTWOOD              | 42 HILLSDALE         | 73 SUNSET HILLS        |
| 12 BRIDGETON              | 43 HUNTLEIGH         | 74 SYCAMORE HILLS      |
| 13 CALVERTON PARK         | 44 JENNINGS          | 75 TOWN & COUNTRY      |
| 14 CHAMP                  | 45 KINLOCH           | 76 TWIN OAKS           |
| 15 CHARLACK               | 46 KIRKWOOD          | 77 UNIVERSITY CITY     |
| 16 CHESTERFIELD           | 47 LADUE             | 78 UPLANDS PARK        |
| 17 CLARKSON VALLEY        | 48 LAKESHIRE         | 79 VALLEY PARK         |
| 18 CLAYTON                | 49 MACKENZIE         | 80 VELDA CITY          |
| 19 COOL VALLEY            | 50 MANCHESTER        | 81 VELDA VILLAGE HILLS |
| 20 COUNTRY CLUB HILLS     | 51 MAPLEWOOD         | 82 VINITA PARK         |
| 21 COUNTRY LIFE ACRES     | 52 MARLBOROUGH       | 83 VINITA TERRACE      |
| 22 CRESTWOOD              | 53 MARYLAND HEIGHTS  | 84 WARSON WOODS        |
| 23 CREVE COEUR            | 54 MOLINE ACRES      | 85 WEBSTER GROVES      |
| 24 CRYSTAL LAKE PARK      | 55 NORMANDY          | 86 WELLSTON            |
| 25 DELLWOOD               | 56 NORTHWOODS        | 87 WESTWOOD            |
| 26 DES PERES              | 57 NORWOOD COURT     | 88 WILBUR PARK         |
| 27 EDMUNDSON              | 58 OAKLAND           | 89 WILDWOOD            |
| 28 ELLISVILLE             | 59 OLIVETTE          | 90 WINCHESTER          |
| 29 EUREKA                 | 60 OVERLAND          | 91 WOODSON TERRACE     |
| 30 FFENTON                | 61 PACIFIC           |                        |
| 31 FERGUSON               | 62 PAGEDALE          |                        |



St. Louis  
**COUNTY PLANNING**  
GEOGRAPHIC INFORMATION SYSTEMS

Prepared by St. Louis County  
Department of Planning  
December 2006